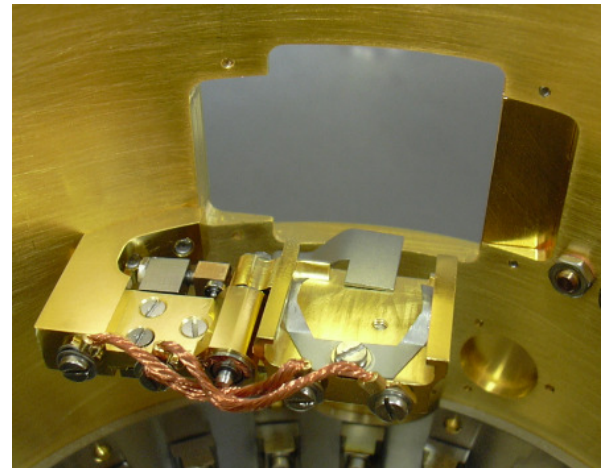
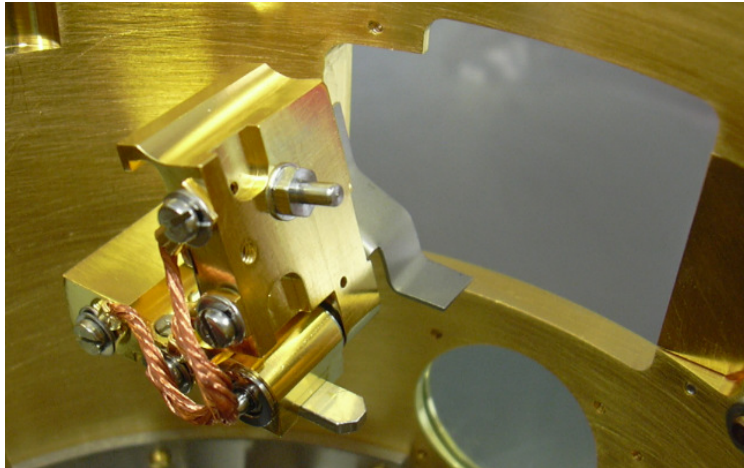
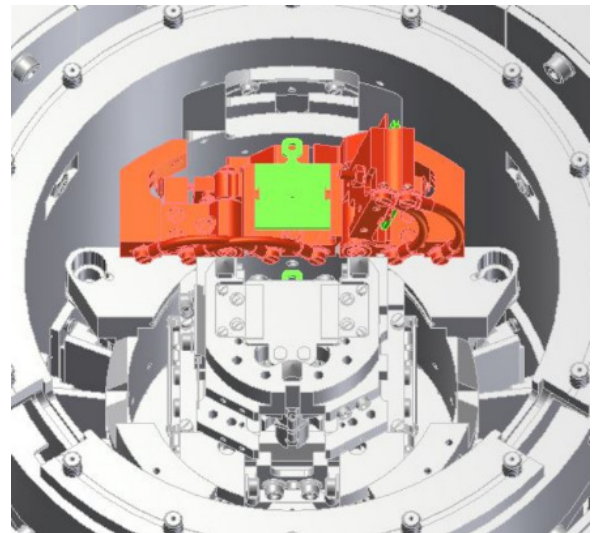


## LT-SPM cooled sample stage

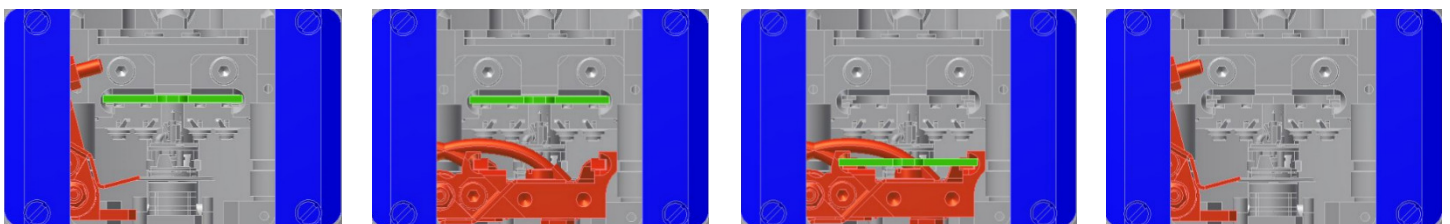
Keep your sample at continual low temperature



- Compact design thermally coupled to LHe shield (<5K)
- Pivoting mechanism allows full access to STM stage with sample “parked”
- 2 cooled sample stages possible left and right side
- Complete set easy to install
- Saves time because sample can be precooled
- Allows cold storage of sample during tip exchange



2nd cooled sample stage



Sample Parking sequence

## Summary

### Parts needed:

- CA10950 Set (LHe shield and door, cooled sample stage)
- Rotatable Wobblestick

### Requirements:

- Rotatable Wobblestick
- Clearance for rotation to be checked if special cabling present

### Limitations:

- Limited functionality if special cabling present

### Options:

- 2<sup>nd</sup> cooled sample stage possible (depending on clearance)