

Analyser Control Upgrades

Get Ready for the Next Generation of Analyser Control

Efficient and accurate communications between the Analyser and the software are critical for high performance measurements. The newest standard for this system uses Ethernet compatible hardware and software components. Upgrading these components will bring your Analyser Control system up to the highest performance level possible.

Key Features of the Upgraded Components

- A complete Windows 10 Solution for analyser control
- Improved signal integrity
- Most recent SES software version
- Ethernet interface simplifies rack add ons
- Future ready: PEAK software compatibility

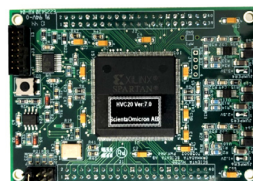
Analyser Control Upgrade Package

To support the transition to an upgraded analyser control system we have bundled together the four components, providing everything you need, together with one year Remote Support

- Remote installation support
- Telephone and email support
- Troubleshooting assistance

Contact us to talk about the Upgrade Package!

The Analyser Control Upgrade Package



Card HVC20 v 7.0



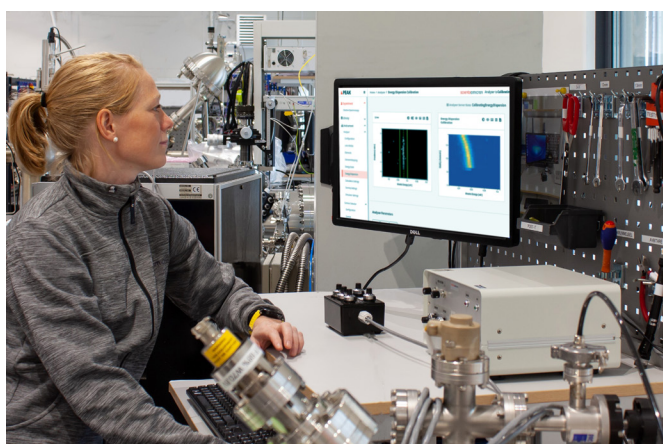
Windows 10 Instrument PC



CMOS Ethernet Camera



Ethernet Rack Upgrade



Future Ready



The Next Generation Software Platform for Analyser Control

Scienta Omicron is currently developing the next generation of software platform for analyser control - PEAK. PEAK's new features includes web based technologies that enable remote control from any device. Upgrading these four components will bring your analyser into compatibility with the future release of the PEAK software platform.

CMOS Ethernet Camera Assembly

Customised High-Speed Detector Module

New CMOS sensor type for higher resolution and speed. A fully integrated hardware and software digital ethernet camera with a customised lens for the specific analyser and application type.

- Sensor type CMOS
- Resolution 1440 x 1080 pixel
- Frame rate 73 fps*
- Interface GigE
- Consists of a Basler ACE ethernet camera, integrated camera holder and support tube, power supply and 10 m ethernet cable
- Customised camera lens for your analyser

*Maximum theoretical frame rate at full resolution



Features

- Advantages to previous assemblies with CCD Sensor
 - Faster (higher frame rate)
 - Higher resolution
 - Better noise performance
- Improved signal integrity gives unlimited cable length
- PEAK compatibility



Ethernet Rack Upgrade

Completes the All Ethernet Solution

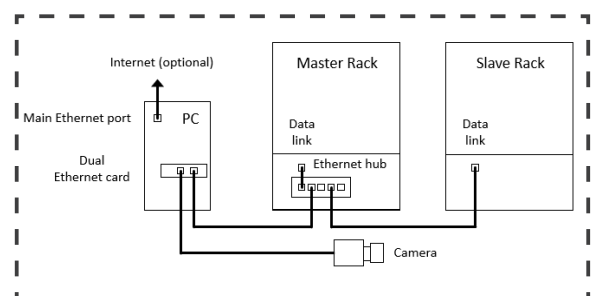
Replaces the RS422/USB data link between the Instrument PC and HV-Rack with GigE interface.

The HV-Rack is upgraded with a new inlet plate on the back which is equipped with an ethernet switch (hub). The hub links all ethernet devices connected to the instrument PC, including the HV-Rack itself.



Features

- Enabled ethernet communication between PC and rack
- Improved signal integrity gives unlimited cable length
- The ethernet interface simplifies rack add ons
- PEAK compatibility



Technical Data

Analyser Control Upgrade Package

Part number

- 201071 Analyser Control Upgrade Package

Card HVC20 v 7.0

Part numbers

- 70581XX Card HVC20 (with firmware)

Parts included

- 70581XX Card HVC20 (with firmware)

Prerequisites

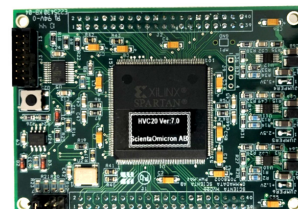
- A compatible Digital Output Module (please contact us to discuss a separate DOM Upgrade if required)

Onsite effort

- Does not require SO Engineer on-site

Options

- Card HVC20 can be upgraded (70581XX)
- Combine with other upgrades, installations or on-site training



Windows 10 Instrument PC

Part numbers

- 201042 Windows 10 Instrument PC

Parts included

- 201042 Windows 10 Instrument PC (does not include monitor/display)
- Power cable

Prerequisites

- 102133 DOM Upgrade
- 70581XX Card HVC20 (with firmware ≥ 3.3)
- Depending on current configuration, additional upgrades may be required

Onsite effort

- Does not require SO Engineer on site

Options

- 201040 Ethernet Rack Upgrade (required for PEAK compatibility and remote support)
- Ethernet Camera (required for PEAK compatibility and remote support)
- Combine with other upgrades, installations or on-site training



CMOS Ethernet Camera Assembly

Part numbers

- 201068 Camera Assembly Basler ACE 73gm

Parts included

- 201068 Camera Assembly Basler ACE 73gm
- Power cable, 12 V adapter
- Camera lens (customised to your analyser specifications)
- 10 m ethernet cable

Prerequisites

- 102133 DOM Upgrade
- 201042 Windows 10 Instrument PC
- 201040 Ethernet Rack Upgrade (not required but recommended)
- Depending on current configuration, additional upgrades may be required

Onsite effort

- Does not require SO Engineer on site

Options

- Combine with other upgrades, installations or on-site training



Ethernet Rack Upgrade

Part numbers

- 201040 Ethernet Rack

Parts included

- New inlet plate for the HV-Rack. Pre-assembled with ethernet hub and cabling

Prerequisites

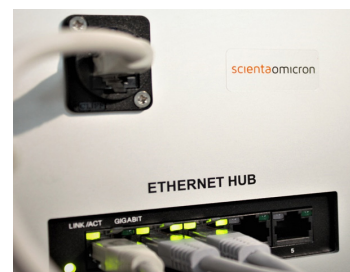
- 70581XX HVC20 v 6.0 or later
- 201042 Windows 10 Instrument PC
- 201068 Camera Assembly Basler ACE 73gm

Onsite effort

- Does not require SO Engineer on site

Options

- Combine with other upgrades, installations or on-site training



How to contact us:

www.scientaomicron.com/contactus

info@scientaomicron.com